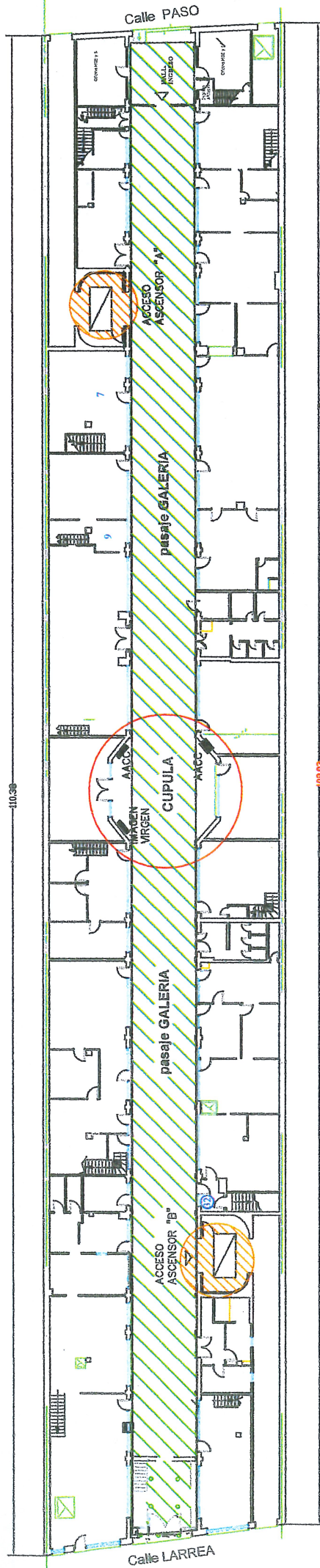



DESTINO: SEDE CENTRAL
 UBICACION: PASO NRO 547/51/53 Y LARREA NRO: 552/56/58/60 -
 CAPITAL FEDERAL.

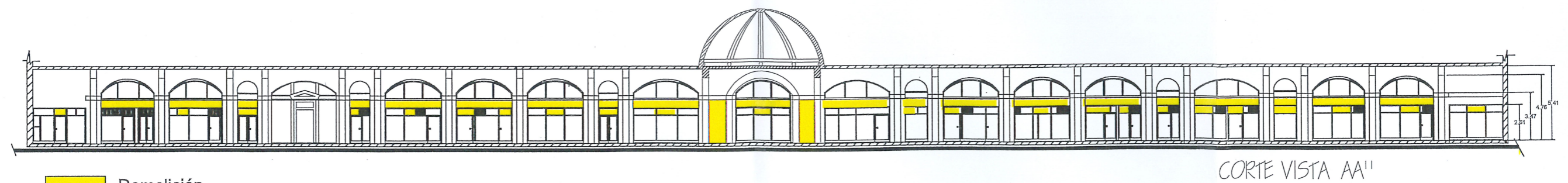
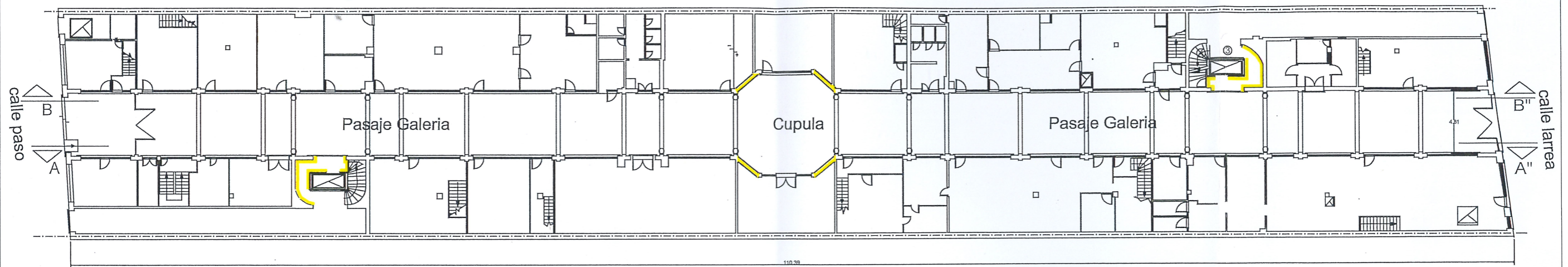
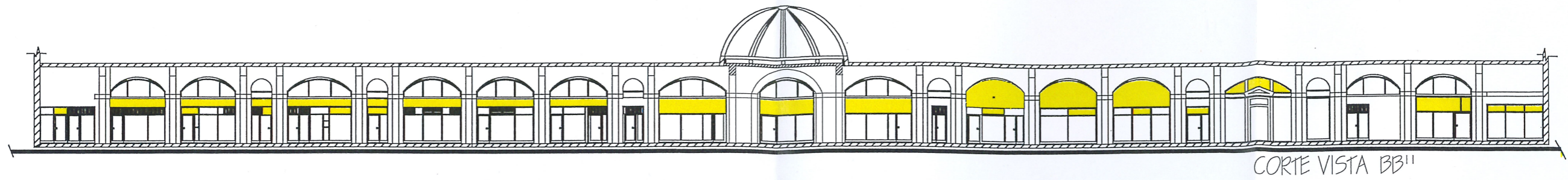


AREAS AFECTADAS

-  PASAJE GALERIA
-  ACCESO ASCENSOR A Y B

(Handwritten signature)

 <p>IOSFA Instituto de Obras Sanitarias y de Fuerzas Armadas y de Seguridad</p>	OBRA: MEJORAMIENTO Y REVALORACION DE PASAJE GALERIA PLANO GRAL AREAS AFECTADAS	Plano Nro 1
	UBICACION: Sede Central calle Paso 547 - Larrea 556 - CABA	



 Demolición

Handwritten signature



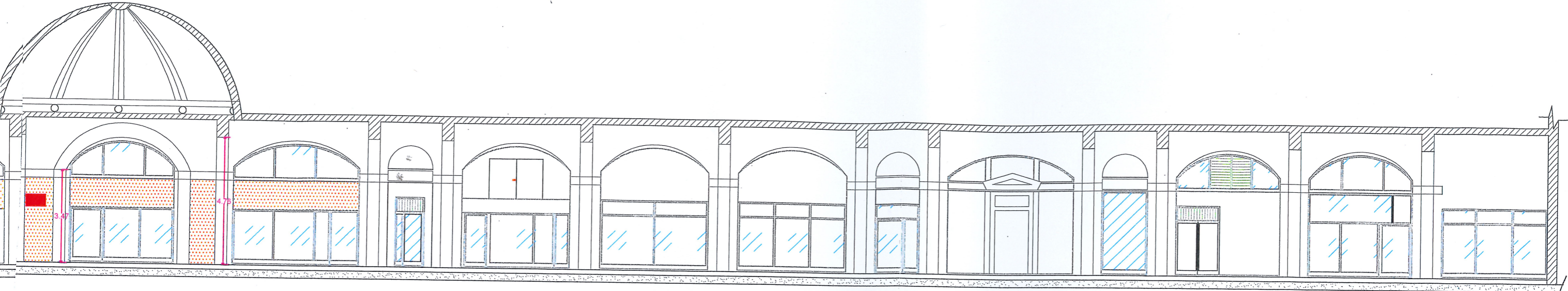
OBRA: REVALORACION DE PASAJE GALERIA
PLANO DE DEMOLICION

UBICACION: Sede Central calle Paso 547 y Larrea 556 - CABA

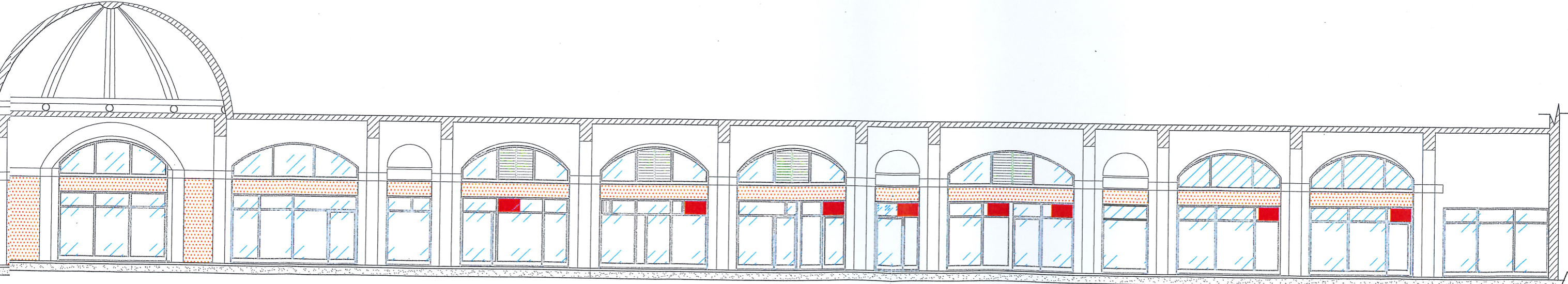
Plano
2



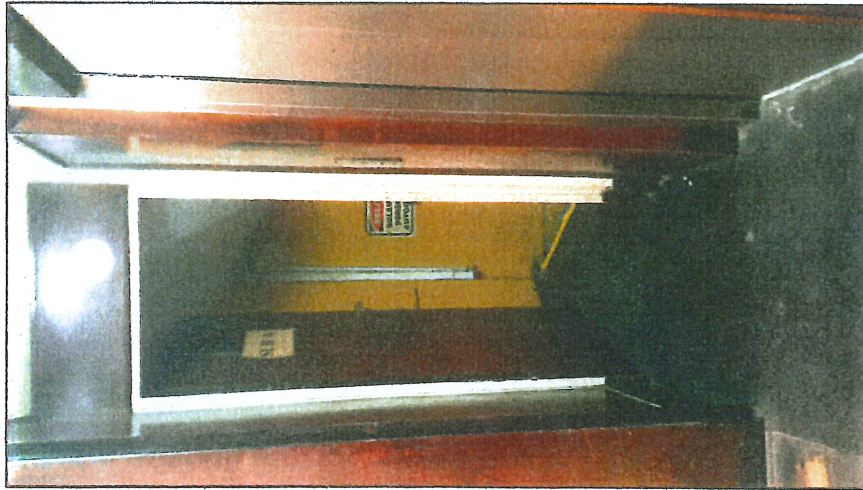
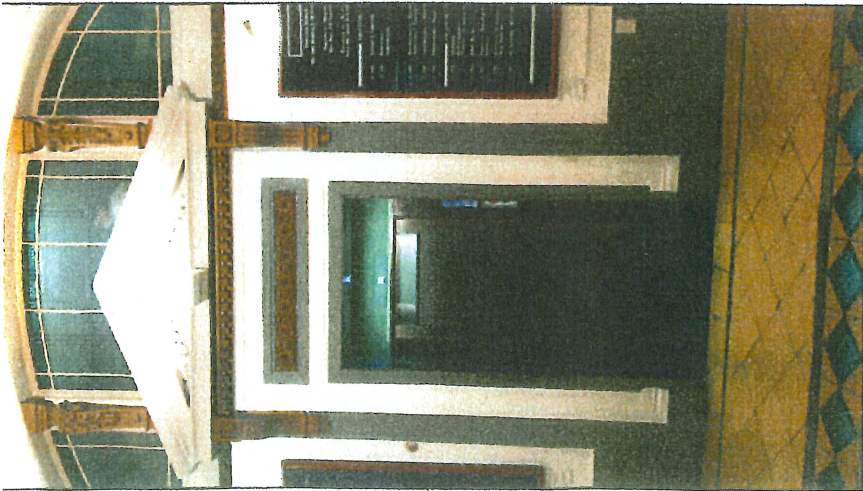
Handwritten signature or initials.



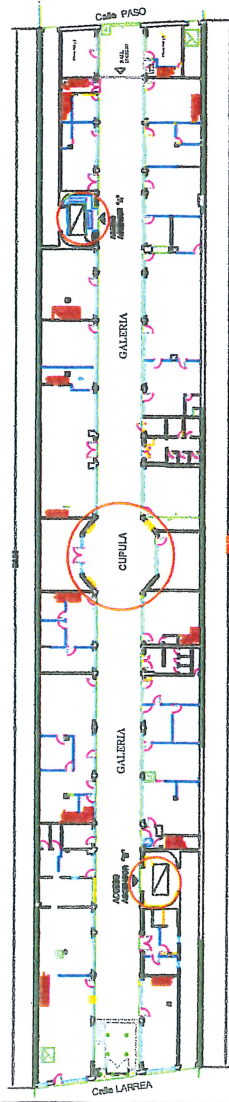
CORTE VISTA BB''








CORTE VISTA AA''



fotos sector ascensor A



REFERENCIAS

-  Demolicion
-  Revestimientos, cielorraso, iluminacion"
-  Revestimiento linea MASISA
-  Cielorraso placa de roca de yeso durlock
-  Artefacto iluminacion led embutido

ACCESO ASCENSOR "A"

Plano
Nro
4

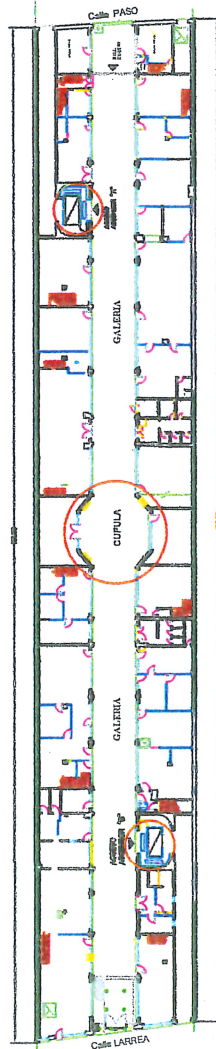
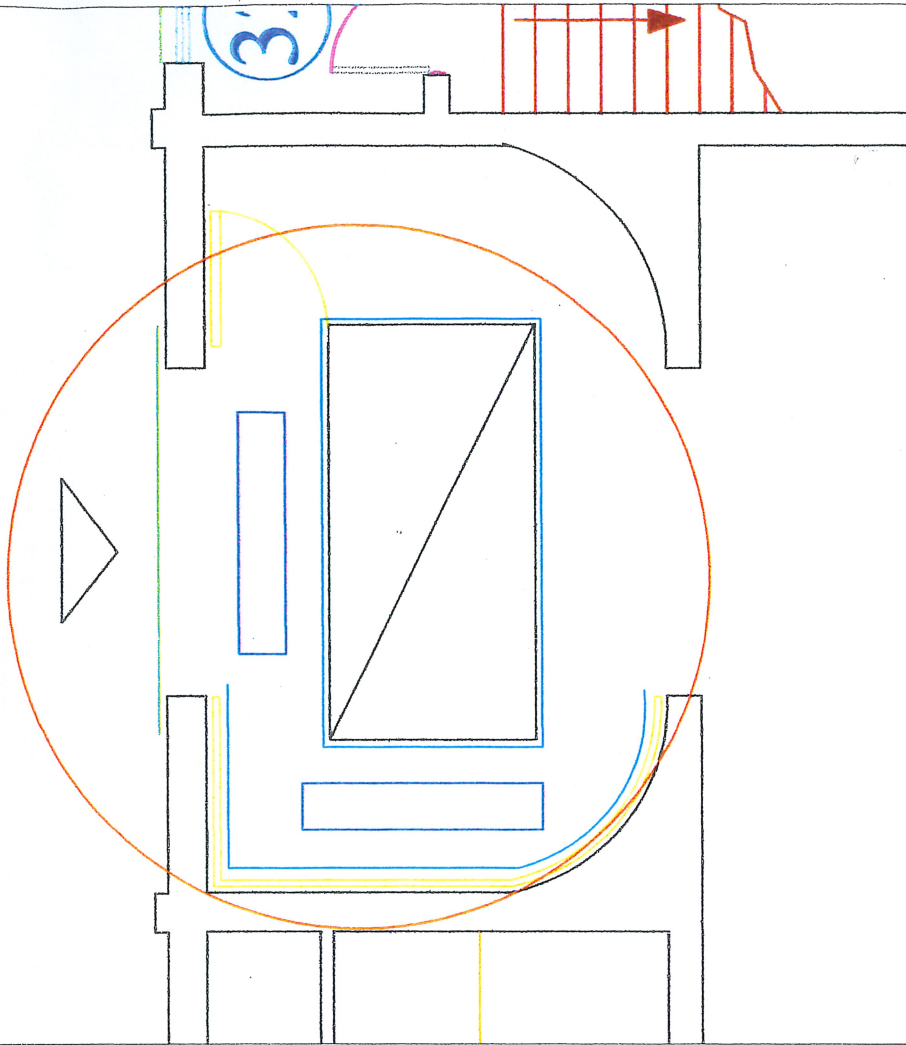
OBRA: MEJORAMIENTO Y REVALORACION DE PASAJE GALERIA
PLANO Sector Ascensor "A"

UBICACION: Sede Central calle Paso 547 - Larrea 556 - CABA










ACCESO ASCENSOR "B"



REFERENCIAS

-  Demolicion
-  Revestimientos, cielorraso, cielorraso, iluminacion"
-  Revestimiento linea MASISA
-  Cielorraso placa de roca de yeso durlock
-  Artefacto iluminacion led embutido



IOSFA
Instituto de Obras Sanitarias y de Seguridad

OBRA: MEJORAMIENTO Y REVALORACION DE PASAJE GALERIA
PLANO Sector Ascensor "B"

UBICACION: Sede Central calle Paso 547 - Larrea 556 - CABA

Plano
Nro
5